

MAILBOX

(Machine Code: G909)

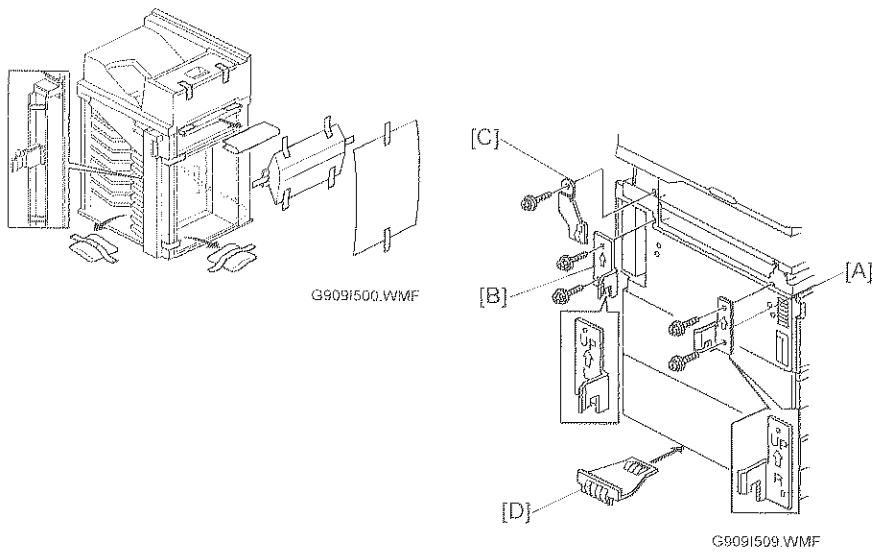
INSTALLATION PROCEDURE

For Machine Code: A230, A231, and A232 Copiers

NOTE: THE MAILBOX MUST BE INSTALLED BY A CUSTOMER SERVICE REPRESENTATIVE WHO HAS COMPLETED THE TRAINING COURSES ON THE BASE MACHINE AND THE MAILBOX.

P/N: G9098610
Printed in Japan

INSTALLATION PROCEDURE



CAUTION
Unplug the main machine power cord before starting the following procedure.

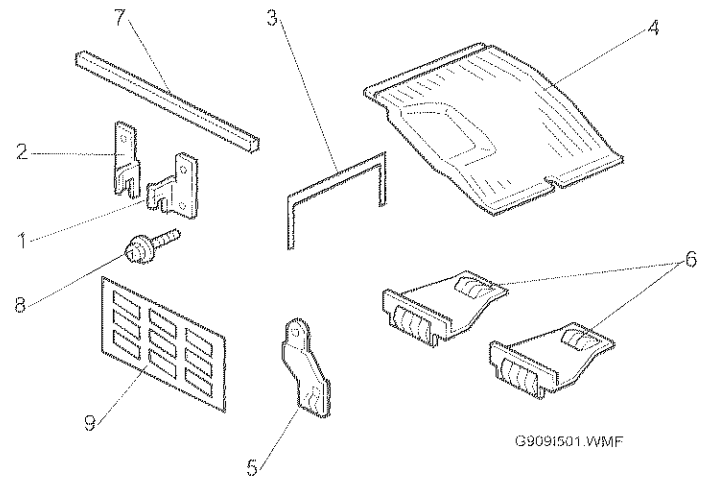
NOTE: 1) When the finisher (A697) will be installed on the machine, the bridge unit for the mailbox (G912) must be installed.
2) The bridge unit for the mailbox must be installed before installing this unit on the main machine.

1. Unpack the finisher and remove the tapes.
2. Attach the front joint bracket [A] and rear joint bracket [B] to the main machine (2 screws each).
3. Attach the upper grounding plate [C] (1 screw).
4. Peel off the backing of the double sided tape that is attached to the lower grounding plate [D].
5. Attach one lower grounding plate to the center of the bottom edge of the paper tray unit as shown.

ACCESSORY CHECK

Check the accessories in the box against the following list.

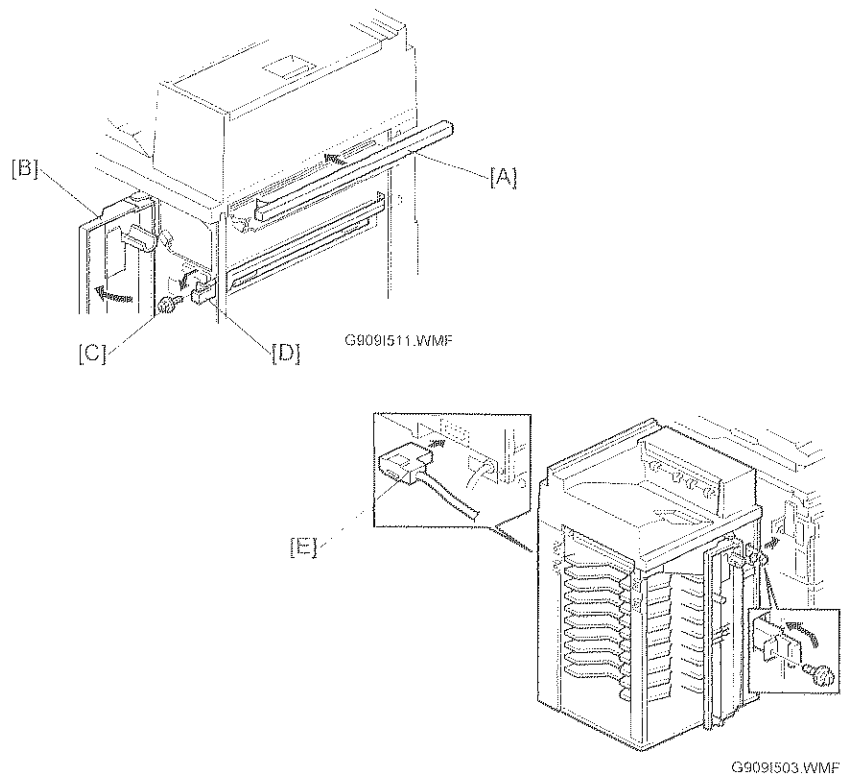
No.	Description	Q'ty	Note
1	Front Joint Bracket	1	
2	Rear Joint Bracket	1	
3	Exit Guide Mylar	1	For A229
4	Proof Tray Attachment	1	For A230, A231, and A232
5	Upper Grounding Plate	1	For A230, A231, and A232
6	Lower Grounding Plate	2	One for A230, A231, and A232 Two for A229
7	Cushion	1	
8	Tapping Screw – M4 x 14	4	
9	Bin Decals	1	
10	Installation Procedure	1	



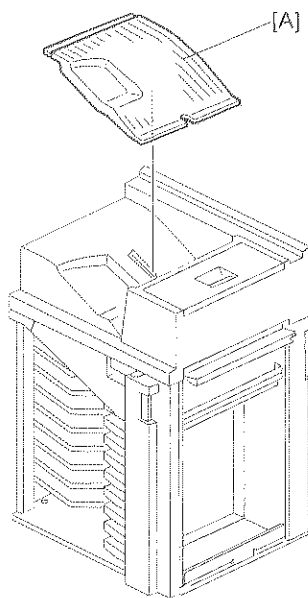
REQUIREMENT OPTIONS FOR MAIN MACHINE

When installing the mailbox, the following options for main machine must be required.

1. Bridge Unit Type 450 (A688)
2. Paper Tray Unit – PS360 (A682)



6. Attach the cushion [A] to the mailbox, as shown.
7. Open the front cover [B] of the mailbox, and remove the screw [C] which secures the locking lever [D]. Then pull the locking lever.
8. Align the mailbox on the joint brackets, and lock it in place by pushing the locking lever.
9. Secure the locking lever (1 screw) and close the front door.
10. Connect the mailbox cable [E] to the main machine.



G909I507.WMF

11. Peel off the backing of the double sided tape that is attached to the proof tray attachment [A].
12. Install the proof tray attachment on the proof tray.
13. Turn on the main switch and check the mailbox operation.